

ANDY WARHOL



- BORN AUGUST 6, 1928 – FEBRUARY 22, 1987
- DIED AT 57 FROM A SURGERY COMPLICATION
- A PITTSBURGH NATIVE
- POP ARTIST
- STARTED OUT AS A GRAPHIC DESIGNER AND SHOE DESIGNER.



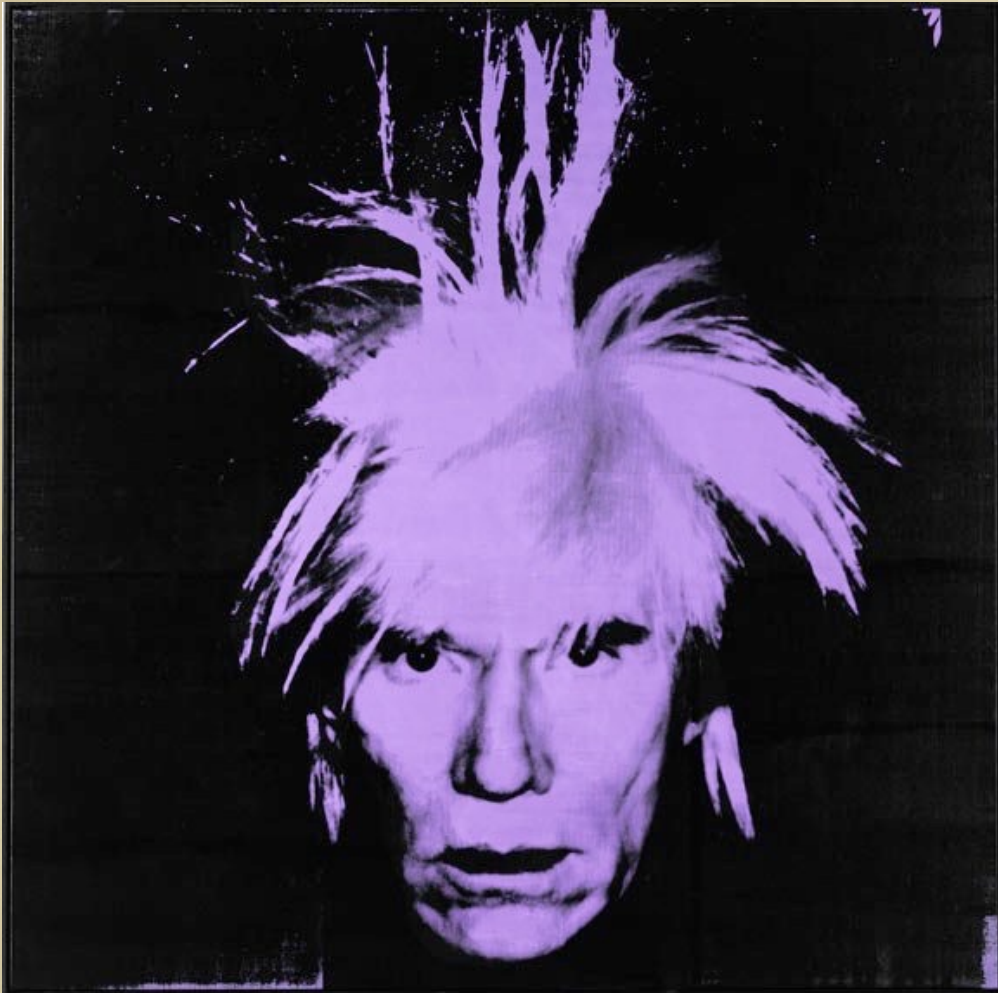
- **AT A YOUNG AGE WARHOL WAS STUCK IN BED DUE TO AN ILLNESS.**
- **GETTING BORED HE STARTED TO LOOK AT MAGAZINE AND SEE WHAT THE FAMOUS ACTORS AND ACTRESSES WERE DOING. HE ALSO DREW IN BED.**
- **BECAUSE OF THAT, HE ALWAYS HAD AN INTEREST IN CELEBRITIES, WONDERING WHAT IT WOULD BE LIKE TO BE FAMOUS.**

SHOES, SHOES, SHOES



ANDY WARHOL

- **WARHOL ENJOYED DRAWING AND KNEW AT AN EARLY AGE THIS IS SOMETHING HE WOULD LIKE TO DO AS A CAREER**
- **HE WENT TO CARNEGIE MELON UNIVERSITY**
- **HE MOVED TO NEW YORK CITY AND GOT A JOB AS A SHOE DESIGNER.**
- **HE WAS VERY SUCCESSFUL DESIGNING SHOES COLOR, STYLE, HEAL, ETC...**



Sotheby's

**WARHOL USED HIS “GRAPHIC”
STYLE FROM DESIGNING SHOES
AND DEVELOPED A TRUE ARTIST
STYLE**

**WARHOL USED “POPULAR”
IMAGES IN HIS SUBJECT MATTER
FOR HIS ARTWORK**

**THIS ARTISTIC STYLE LATER GOT
THE NICKNAME “POP ART”**

**WARHOL USED A SILK SCREENING
PROCESS. THIS ALLOWED HIM TO
GET A PHOTOGRAPHIC IMAGE ONTO
A CANVAS.**

**HE ENJOYED WHEN THE PAINT
WOULD DRIP OR RUN INTO
ANOTHER COLOR.**

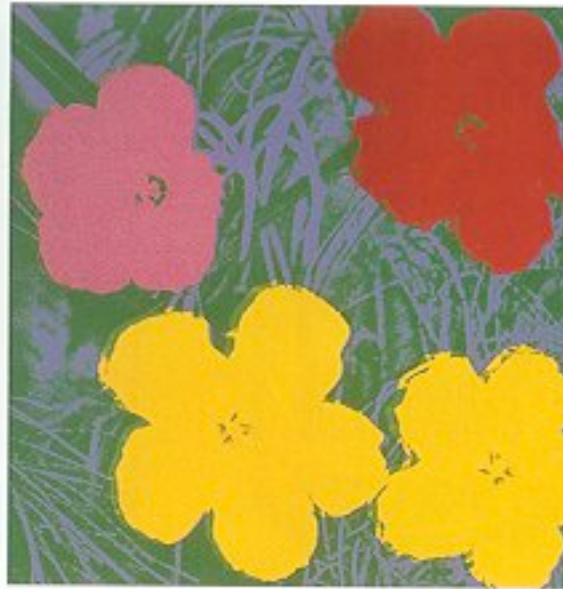
**HE ENJOYED USING “OFF” COLORS
AND DREW ON TOP OF THE FAMOUS
PEOPLE TO CREATE AN ACCENT ON
THEIR HAIR, MAKE-UP, LIPS, ETC....**



MARILYN MONROE - SAME IMAGE USED WITH DIFFERENT PAINT COLOR COMBINATIONS



11.64



11.65



11.66



11.67

SAME FLOWERS USED WITH DIFFERENT COLOR COMBINATIONS



■ NOTICE HOW HE DREW ON TOP OF THE SCREEN PRINT?

■ WHO IS THIS?



■ WARHOL TOOK “POPULAR” PEOPLE AS WELL AS “POPULAR” ITEMS. WARHOL WANTED YOU TO QUESTION “WHAT IS ART” IF SOMEONE DESIGNED A SOUP CAN AND WE SEE IF EVERYWHERE IN A GROCERY STORE...IS IT ART?

■ WHAT DO YOU THINK?

LET'S TALK ART!

- **HOW WAS THIS WORK MADE? (WHAT MATERIALS)**
- **IS THERE ANYTHING “SPECIAL” ABOUT HOW THE ARTIST USED THE MATERIALS?**
- **CAN YOU TELL WHERE THE ARTIST IS FROM BY LOOKING AT THE PAINTING? OR A TIME PERIOD?**



SOUP CAN

LET'S TALK ART!

- WHAT MAKES THIS ARTIST SPECIAL?
- CAN YOU TELL IF THE ARTIST IS IN A CERTAIN ART STYLE (ABSTRACT?, IMPRESSIONISM?, CUBISM?)
- WHAT IS THE SUBJECT MATTER OF THIS PAINTING?



SOUP CAN

LET'S TALK ART!

- WHAT DO YOU LIKE ABOUT THIS WORK?
- WHAT STANDS OUT TO YOU? WHERE DOES YOUR EYE GO FIRST?
- WHAT ARE THE SHAPES OR COLORS YOU SEE?



SOUP CAN

LET'S TALK ART!

- WHY DO YOU THINK THE ARTIST MADE THIS PICTURE?
- WOULD YOU LIKE TO OWN THIS PIECE OF ARTWORK?
- WHAT IS YOUR OVERALL IMPRESSION OF THIS PIECE?



SOUP CAN

LET'S MAKE ART!

- **HAVE ANY OF YOU EVER BEEN TO THE ANDY WARHOL MUSEUM IN PITTSBURGH?**
- **THERE ARE A LOT OF “POPULAR” IMAGES IN THE MUSEUM.**
- **WHAT ARE “POPULAR” IMAGES FOR YOU?**
(FAMOUS FOOTBALL PLAYER, ACTOR, OLYMPIAN?)
- **WHAT IF WE DREW YOUR TEACHER TODAY IN AN ANDY WARHOL STYLE!!!**