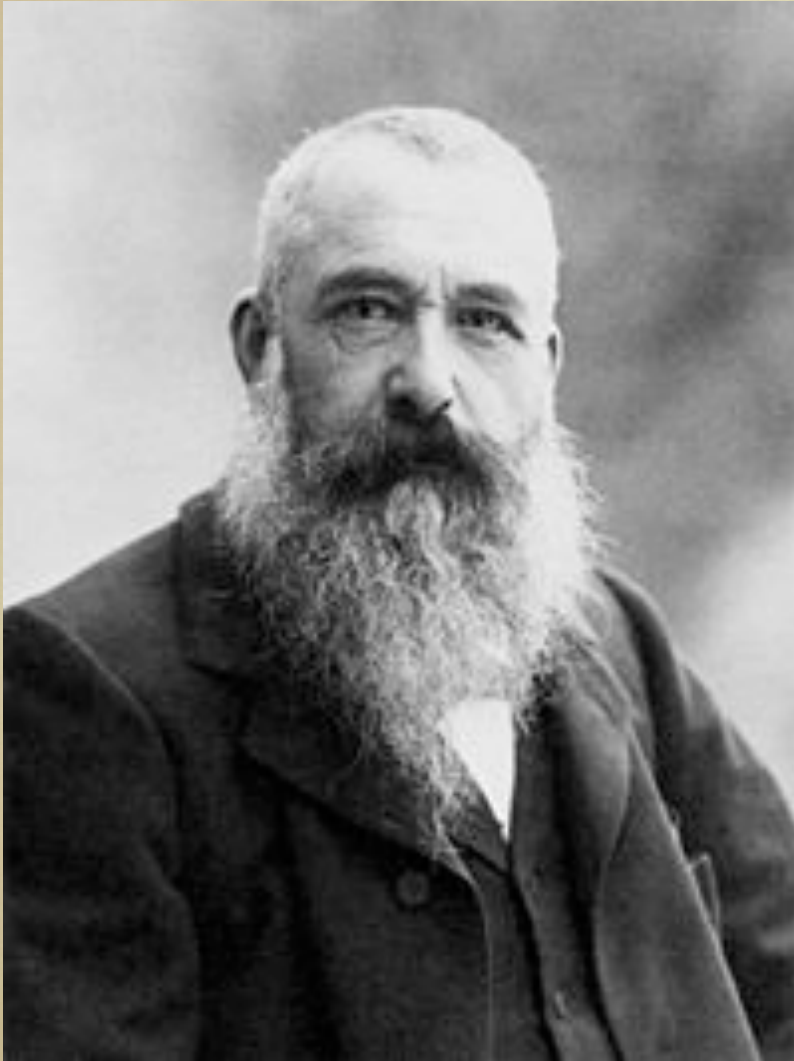


CLAUDE MONET



- **NOVEMBER 14 1840 – DECEMBER 5 1926**
- **BORN IN PARIS AND AT A YOUNG AGE MOVED TO LE HARVE**
- **WAS A FOUNDER OF FRENCH IMPRESSIONIST PAINTING**
- **HIS FATHER WANTED HIM TO GO INTO THE FAMILY GROCERY BUSINESS, BUT MONET WANTED TO BECOME AN ARTIST. HIS MOTHER WAS A SINGER**
- **ON 1 APRIL 1851, MONET ENTERED LE HAVRE SECONDARY SCHOOL OF THE ARTS. LOCALS KNEW HIM WELL FOR HIS CHARCOAL CARICATURES, WHICH HE WOULD SELL FOR TEN TO TWENTY FRANCS**

EARLY WORK - WOMAN IN THE GARDEN

- MONET STARTED TO “LOOSEN” UP HIS STYLE FROM OTHER REALISTIC PAINTERS
- HE BEGAN TO PAINT A TREE OR FLOWERS BY TAPPING HIS BRUSH TO GIVE THE “IDEA” OF LEAVES OR FLOWERS.
- HE WASN'T WORRIED ABOUT PAINTING EVERY FLOWER “REALISTICALLY”



EARLY WORK - JARDIN À SAINTE-ADRESSE

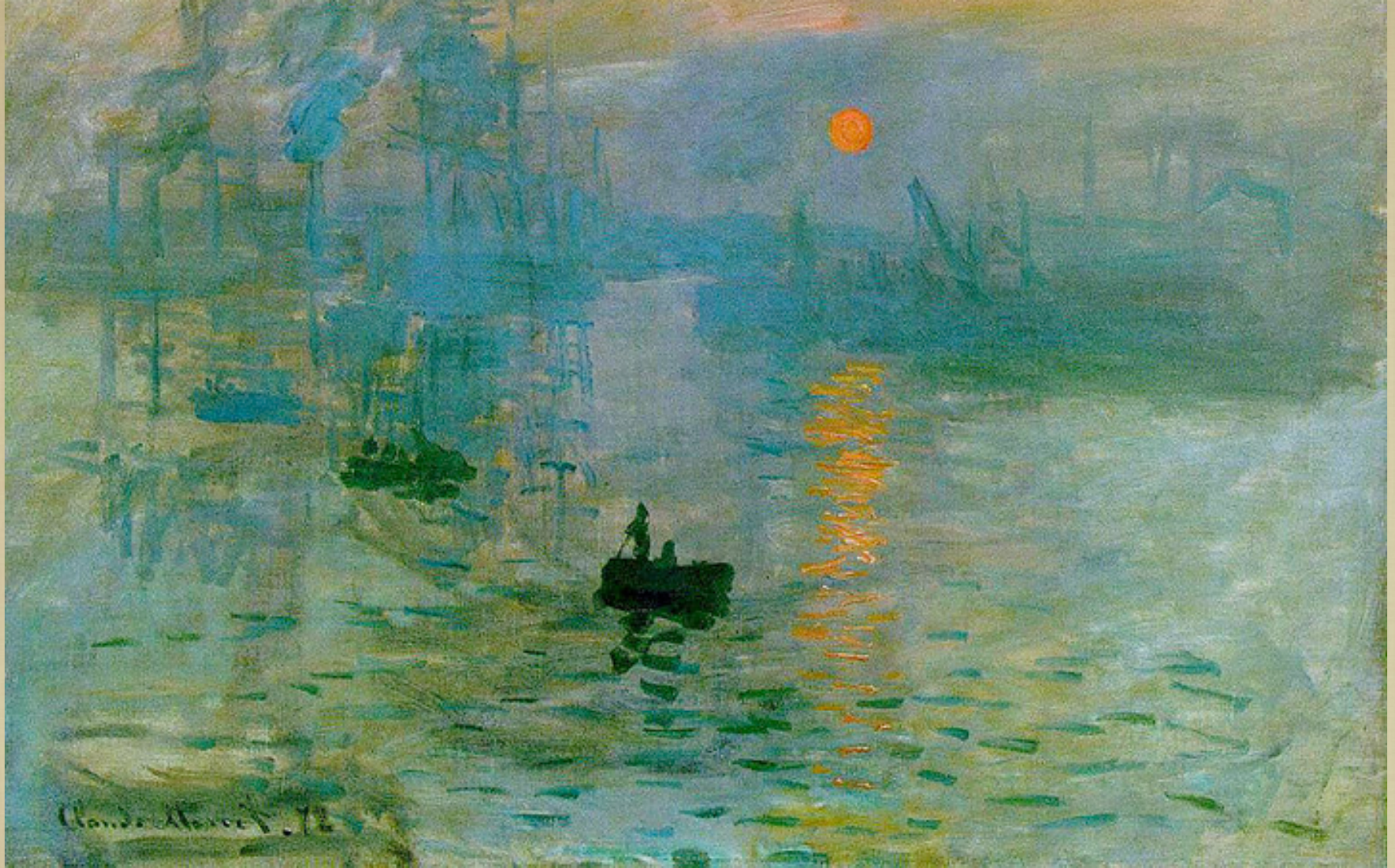
- NOTICE HOW LOOSE THE FLOWERS ARE PAINTED
- THEY ARE JUST DABS OF COLOR!
- IS THERE ANYONE WHO DOESN'T THINK THEY ARE FLOWERS?



LATER WORKS OF ART - WOMAN WITH PARASOL

- NOTICE THE ARTWORK IS GETTING LOOSER
- THE COLORS ARE LIGHTER
- THE ANGLE, LOOKING UP MAKES THE PAINTING MORE INTERESTING
- THE WOMAN'S FACE IS NOT IMPORTANT AS AN IMPRESSIONIST
- THIS WOMAN COULD BE ANYONE, THE ARTIST DOESN'T NEED TO FEEL LIKE THEY ARE PAINTING ONE SPECIFIC PERSON





- MONET TITLED THIS PIECE - IMPRESSION
- ART CRITICS “USED” THE TITLE TO SUM UP THIS STYLE AND THEREFORE CALL MONET AND SIMILAR ARTISTS FROM THAT TIME PERIOD -IMPRESSIONISTS

TIME OF DAY STUDIES

- MONET BECAME INTEREST IN HOW COLOR WOULD CHANGE ACCORDING TO THE TIME OF DAY!
- HE BEGAN TO PAINT THE SAME SUBJECT AGAIN AND AGAIN BUT AT DIFFERENT TIMES OF THE DAY TO SEE HOW THE COLOR MIGHT CHANGE
- THINK ABOUT A SUNRISE? WHAT COLORS SHINE ON YOUR HOUSE IN THE MORNING THAT AREN'T THERE IN THE AFTERNOON?



- LOOK AT THE COLORS MONET USED.
- WHAT TIME OF DAY WOULD YOU GUESS IT IS?
- HAVE YOU BEEN SOMEWHERE WHERE YOU FELT LIKE THE LIGHTING WAS SIMILAR?



- LOOK AT THE COLORS MONET USED.
- WHAT TIME OF DAY WOULD YOU GUESS IT IS?



- LOOK AT THE COLORS MONET USED.
- WHAT TIME OF DAY WOULD YOU GUESS IT IS?



- LOOK AT THE COLORS MONET USED.
- WHAT TIME OF DAY WOULD YOU GUESS IT IS?



- **LOOK AT THE COLORS MONET USED.**
- **WHAT TIME OF DAY WOULD YOU GUESS IT IS?**

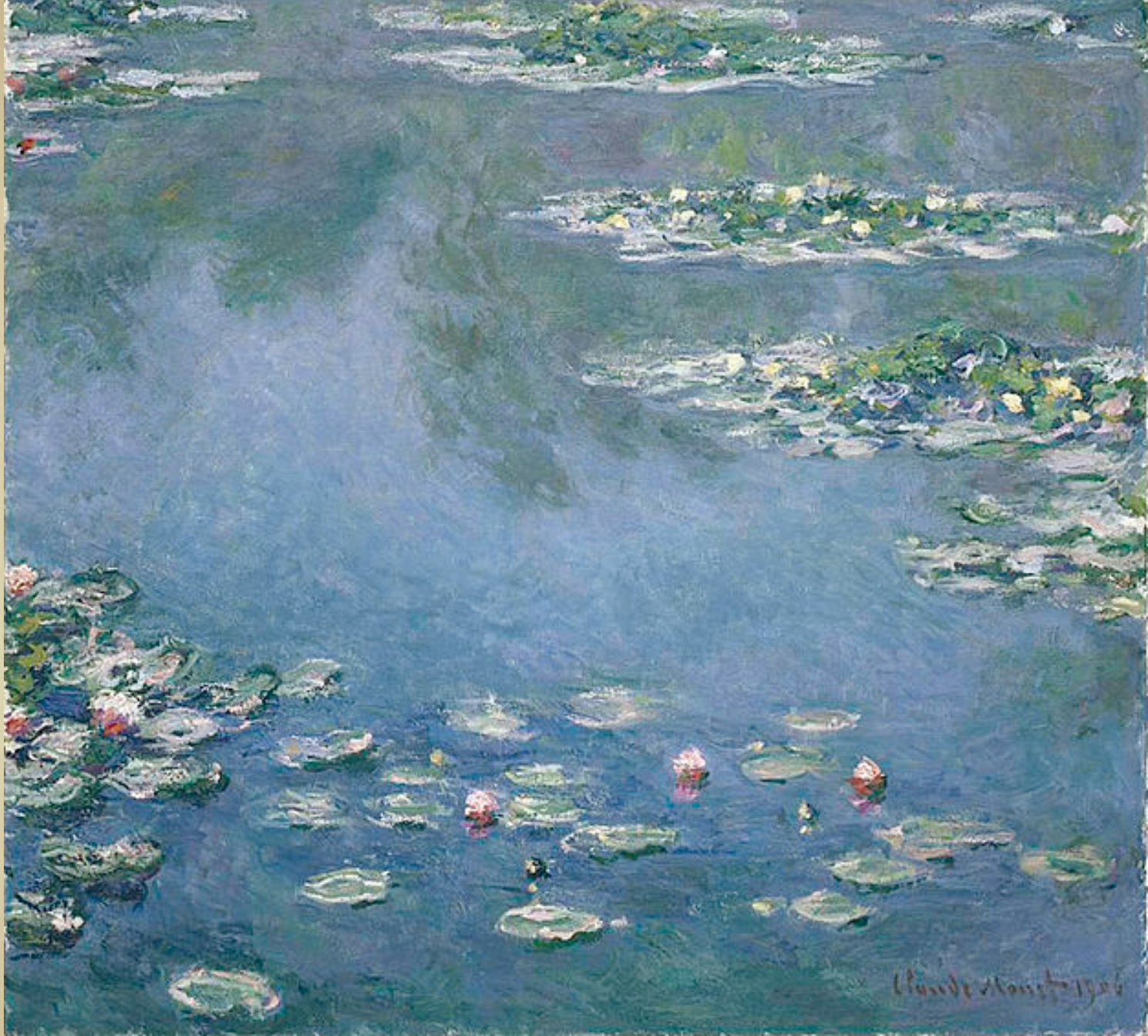


ANSWERS....

- THE CATHEDRAL PICTURES WENT IN ORDER WITH THE TIME OF DAY...
 - MORNING - FOGGY, MISTY
 - MID-MORNING - WARMING UP
 - NOON
 - MID-AFTERNOON - SUN HITTING THE CHURCH
 - LATE-AFTERNOON - SUN STARTING TO GO

LET'S TALK ART!

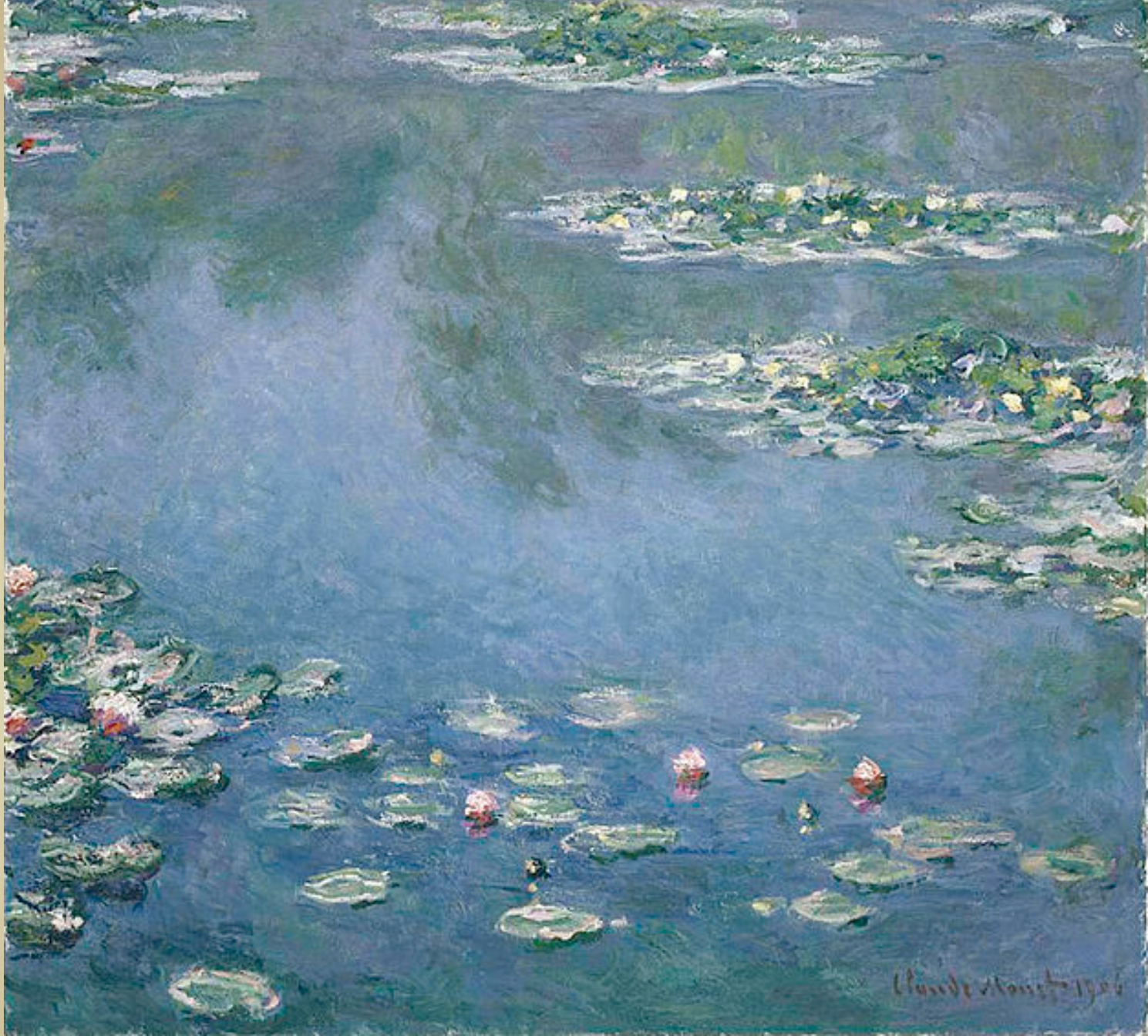
- **HOW WAS THIS WORK MADE?** (WHAT MATERIALS)
- **IS THERE ANYTHING “SPECIAL” ABOUT HOW THE ARTIST USED THE MATERIALS?**
- **CAN YOU TELL WHEN OR WHERE THE ARTIST IS FROM BY LOOKING AT THE PAINTING?**
- **CAN YOU TELL THE SIZE OF THIS PAINTING?**



WATER LILIES

LET'S TALK ART!

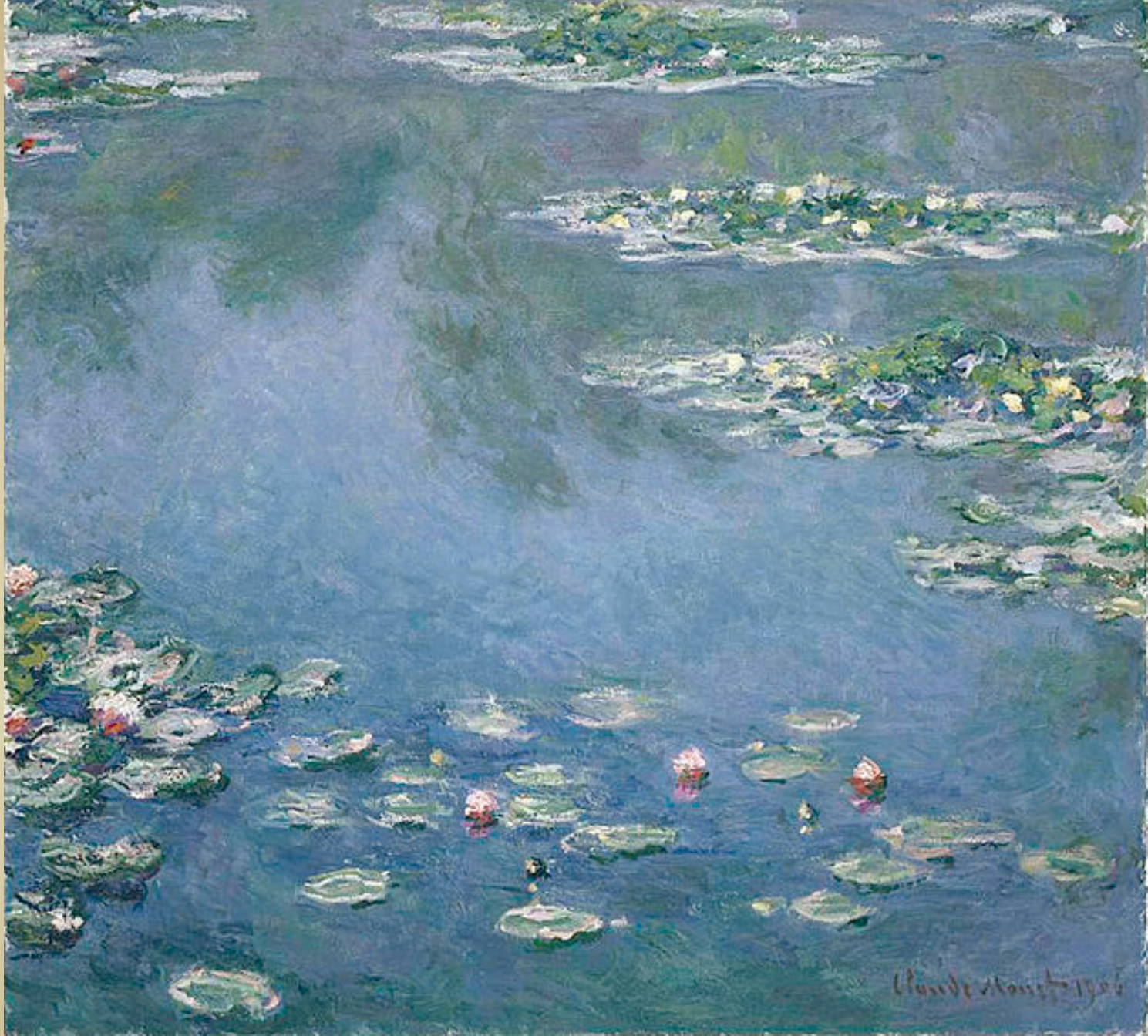
- WHAT MAKES THIS ARTIST SPECIAL?
- CAN YOU TELL IF THE ARTIST IS IN A CERTAIN ART STYLE (ABSTRACT?, IMPRESSIONISM?, CUBISM?)
- WHAT IS THE SUBJECT MATTER OF THIS PAINTING?



WATER LILIES

LET'S TALK ART!

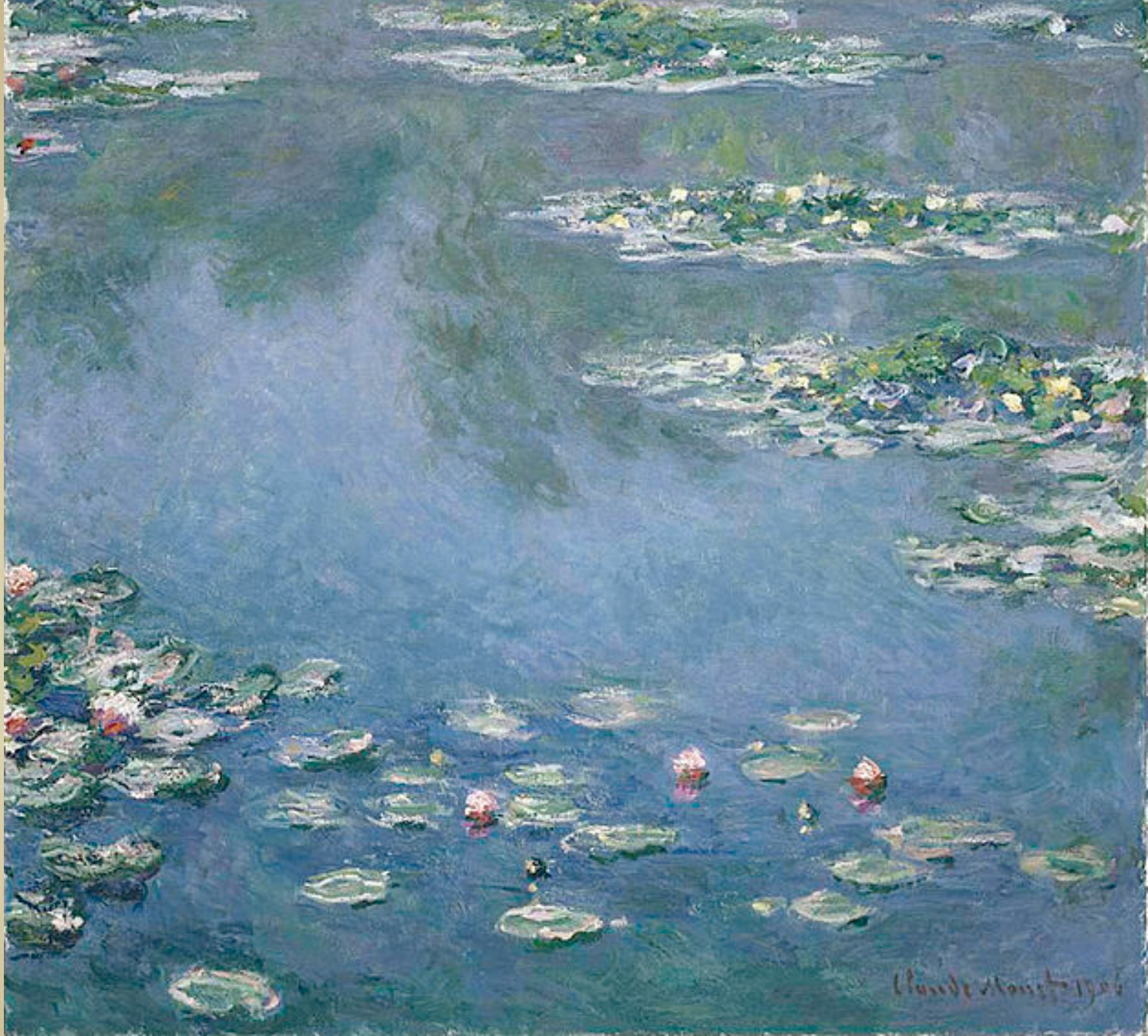
- WHAT DO YOU LIKE ABOUT THIS WORK?
- WHAT STANDS OUT TO YOU? WHERE DOES YOUR EYE GO FIRST?
- WHAT ARE THE SHAPES OR COLORS YOU SEE?



WATER LILIES

LET'S TALK ART!

- WHY DO YOU THINK THE ARTIST MADE THIS PICTURE?
- WOULD YOU LIKE TO OWN THIS PIECE OF ARTWORK?
- WHAT IS YOUR OVERALL IMPRESSION OF THIS PIECE?



WATER LILIES

LET'S MAKE ART!

- **HAVE ANY OF YOU EVER SEEN A MONET PAINTING IN PITTSBURGH?** (WE HAVE A WATERLILIES AT THE CARNEGIE MUSEUM!)
- **LOOK HOW BIG THIS PAPER IS....**
- **ITS THE SIZE OF THE MONET PAINTING AT OUR PITTSBURGH MUSEUM**
- **TRY AND CREATE A WATERLILY FOR THE PAINTING AND WE WILL ADD ALL OF THEM TOGETHER ONTO THIS PIECE OF PAPER!!!** (WOW MONET WAS A BUSY PAINTER!!)